



Singapore Examinations and Assessment Board

2021

Primary School Leaving Examination

**Instructions
For
Candidates**

Contents

1. Introduction	1
2. Sitting for Examinations	2
2.1 Points to Note in the Examination	3
2.2 Examination Regulations	6
2.3 Use of Dictionaries	11
2.4 Use of Scientific Calculators	12
2.5 Access Arrangements	14
2.6 Annotation Symbols	15
2.7 Instructions for Unexpected Situations	16
3. Results & Certificates	
3.1 PSLE Results Release	17
3.2 Results Slips and Certificates	17
3.3 Withdrawal from PSLE	19
3.4 Appeal for Review of Results	20
3.5 Ownership of All Documents Issued to Candidates	20
4. Annexes	
Annex A: PSLE Timetable	21
Annex B: List of Approved Dictionaries	25
Annex C: List of Approved Scientific Calculators ...	31
Annex D: Checklist for PSLE	35
Annex D1: Items allowed and disallowed for use during the examination	36
Annex D2: DOs and DON'Ts for the examinations	37

Icon:  Important information

Acknowledgement

Vectors are courtesy of Freepik

1. INTRODUCTION

- Welcome to the final year of your primary school education journey. This is a milestone year where you will be sitting for the Primary School Leaving Examination (PSLE).
- This booklet contains instructions and regulations for the PSLE. Please read carefully and comply with them.
- You may use the checklist in **Annex D** as a guide on what to take note of and bring for the PSLE.
- We strongly recommend that you share the information in this booklet with your parents / guardians.
- If you are sitting for the Non-Tamil Indian Language (NTIL) examinations, you will be given a set of “Instructions for Candidates on the NTIL Examinations”, in addition to this booklet. Please approach your teacher / school for the set of instructions on NTIL Examinations if you did not receive it.
- For details on the examination syllabuses, you can visit SEAB’s website at <https://www.seab.gov.sg>
- If you have any queries, please approach your teacher for clarification.
- We wish you all the best for your PSLE.

2. SITTING FOR EXAMINATIONS

- It is compulsory for you to sit for all of your registered examinations, including all component papers.
- If you are a Singapore Citizen as of 24 March 2021, you will be given a full waiver of the examination fees.
- You will not be entitled to a waiver of the examination fees if you are granted Singapore citizenship after 24 March 2021.
- The examination timetable can be found in **Annex A**.
- With the evolving COVID-19 situation, candidates must also observe and comply with any additional instructions and safe management measures that SEAB may announce nearer to the examination dates. Candidates will be informed of any updates of instructions and procedures through their schools.

2.1 Points to note in the Examination

FOR ALL PAPERS

Shading of answers to Multiple Choice Questions

- You should **use a 2B pencil to shade your answers on the Optical Answer Sheet (OAS). Shade the oval completely and firmly.** Not doing so may result in unclear answers.
- Do not write the answers in the question booklet as they will not be marked.
- You can use a soft eraser if you wish to change your answers. Erase the shaded oval completely before shading the new oval.
- You should not crumple, fold, tear, wet, damage the OAS or make any unnecessary marks on any part of the form, other than shading the oval for the questions.

Questions that require you to provide your answers on the answer booklet:

- You should **write your answers clearly in blue / black ballpoint pen with 0.5mm tip size.** If you need to change your answers, cross them out and re-write the answers. Candidates should not write the answers in pencil as the responses may appeared too faint for marking.

- **Do not use correction fluid / tape** in the examinations as it may affect the legibility of the answers. There are instances where candidates did not complete their answers after the correction fluid / tape had been applied. Correction fluid / tape may also damage the answer scripts (e.g. covering other parts of the answers or the pages may stick together).
- You **should not use highlighter** to highlight any part of your answers as this may also affect legibility of the answers.
- The duration of each examination paper includes the time for reading the questions, writing and/or shading your answers.

ORAL EXAMINATION

- The Oral examinations for English Language (EL) / Foundation EL and Mother Tongue Language (MTL) / Foundation MTL will be held on two separate days.
- Your school will inform you of your reporting time and the examination that you will be sitting for, prior to the two days of your Oral examination.
- Do not bring any reading materials or notes to the examination rooms, including silent preparation station.

LISTENING COMPREHENSION EXAMINATION

- The Listening Comprehension (LC) examination consists of multiple-choice questions (MCQs).
- You should shade the appropriate oval on the Optical Answer Sheet (OAS) for your answer to each question.
- You must complete the shading of answers within the duration of the LC examination. No extra time will be given at the end of the broadcast to shade the answers.
- **If you are not able to hear the LC broadcast clearly, you should raise your hand immediately to inform the invigilator.**

WRITTEN EXAMINATION

- The written examination will be held over five days.
- You are required to write your index number on the cover page of the answer sheet / booklet and question booklet. For some papers, you will also be required to shade your index number in the ovals provided.
- You should read and follow the instructions printed on each question booklet and answer sheet / booklet carefully.

For the **Composition papers**,

- You will be given a **Composition Answer Booklet**.
- You must only write your answers on all the lined or boxed pages.
- You may do your rough work on the blank pages.

For **papers with MCQs**, you should shade the appropriate oval on the Optical Answer Sheet (OAS), answer sheet or answer booklet for your answer to each question.

2.2 Examination Regulations

**BEFORE
the start of the examination**



You **must**

- be punctual for all examination papers. You will not be given make-up time if you are late without valid reason(s).
- be seated at your assigned desk at least 15 minutes before the start of each examination.
- be in your school uniform when you report for the examination at your school / examination centre.

- **pay attention when the exam personnel is giving instructions.**
- bring all materials needed for the examination. They include blue / black ballpoint pens with 0.5mm tip size, 2B pencils, soft erasers, sharpeners and standard mathematical instruments (ruler, protractor and set-squares).
- **Do not have in your possession** any unauthorised electronic, smart, computerised or communication devices in the examination venue (e.g. examination room / hall, quarantine room, waiting room). These include, but not limited to the following:



- **Computerised devices**
 - Tablet
 - Pocket PC
 - PDA
 - Digital diary
 - eBook
- **Communication devices**
 - Mobile phone
 - Smart watch
 - Earphone
- **Smart devices**
 - Smart watch
 - Smart glasses
 - Fitness tracker
- **Other Electronic devices**
 - Camera
 - Audio recorder / player
 - Gaming device
 - Storage device
- For papers that allow the use of dictionaries or calculators, **do not bring** printed dictionaries / electronic dictionaries or calculators that are not on the approved list into the examination venue (e.g. examination room / hall).

- **Place your bag** outside the examination venue or in a place identified by the examination personnel. **Do not bring** any unauthorised materials within the examination venue (e.g. Examination room/ hall). These include, but not limited to the following:
 - Writing papers
 - Sticky notes
 - Books
 - Writings on entry proof
 - Notes / reference materials
 - Conversion table / Formulae sheets in mathematical set or calculator cover
- **Please surrender any unauthorised devices, equipment, materials and personal belongings to the invigilator immediately if you have brought them into the examination room / hall. You will not be penalized if you do so before the examination begins.**

**DURING
the examination**

- **Do not attempt to cheat or assist in cheating.**
- **Face the front, do not turn or look around** during your examination, as this may be perceived as cheating.
- **Do not communicate (verbally or non-verbally)** with other candidates before and during your examination, and before you are released from the examination venue.



- **Pay attention when the exam personnel is giving instructions, stop writing and put down your pen immediately when instructed to do so.**
- If you are not feeling well or need to go to the toilet urgently, remain seated and raise your hand to inform the invigilator. The examination personnel will bring you to a rest area or toilet.
- **Do not eat** in the examination venues (e.g. examination room / hall, quarantine room, waiting room).

**AT THE END
of the examination**



- You must **stop writing and close your answer booklet immediately** when told to do so by the invigilator.
- You must **remain seated, face the front, and not communicate (verbally or non-verbally) with other candidates**, while the question booklets, answer booklets and/or OAS are being collected.
- **Do not remove** any used or unused papers, question booklets, answer booklets and OAS from the examination room / hall.

- **Do not leave the examination venues (e.g. examination room / hall and quarantine / waiting room) without permission from the invigilator. You are only allowed to leave the examination room / hall and quarantine / waiting room when you are told to do so by the invigilator.**



If you cheat, attempt to cheat, assist in cheating, misbehave, or do not follow the examination regulations during the examination, you may:

- be banned from taking the examination
- be expelled from the examination venue (e.g. examination room / hall)
- be disallowed from sitting for subsequent papers
- have your examination results terminated or be imposed with a grade penalty
- have your result slip and/or examination certificate withheld or confiscated
- be banned from registering for the examination in the future

2.3 Use of Dictionaries



Mother Tongue Languages (MTL)

- You are allowed to use an **approved dictionary** for Paper 1 (**Composition**) of **MTL and Higher MTL**. You can refer to Annex B for the list of approved printed and electronic dictionaries.

Non-Tamil Indian Languages (NTIL)

- You are allowed to use a dictionary for NTIL Paper 1 (Composition). There is no list of approved dictionaries for NTIL. You can bring in any monolingual dictionary.

Other General Instructions

- No annotation on any pages of your printed dictionary are allowed. Annotations include stickers, highlighted text, and/or written text. Your dictionary must also be checked by your school beforehand and bear the school's stamp.
- If you are using an electronic dictionary, it must be checked by your school beforehand, but a school stamp is not required.

- The electronic dictionary must be set to silent and battery operated. No ear-pieces are permitted in the examination room / hall. You are advised to bring along a spare set of batteries for your electronic dictionary.



Any unauthorised dictionary found in your possession during the examination will be confiscated.

You are not allowed to borrow any dictionary from other candidates during the examination.



2.4 Use of Scientific Calculators

You are allowed to use only **approved scientific calculator models** for Mathematics Paper 2 / Foundation Mathematics Paper 2. You can refer to **Annex C** for the list of approved calculator models recommended for use.

Your calculator must:

- be silent, with a visual display only
- indicate the original model number and brand clearly, for verification purposes
- be in working condition (this includes the power supply). This is the responsibility of the candidate and any calculator fault will not be accepted as justification for special consideration.

You are to ensure the following:

- do not share calculators with other candidates during the examination



- do not bring in calculators with an external storage function which can allow users to input and store data via external storage media, e.g. cards, tapes and plug-in modules
- do not bring in calculators with wireless communication capability with other machines, e.g. infra-red communication capability
- do not bring in calculators with capabilities for storing and displaying verbal information
- do not bring in any instruction leaflets containing any mathematical formula, conversion table or instructions, into the examination venue. Any such information that is found on the calculator and cannot be removed must be securely covered.



It is a violation of the regulations to use calculators with unacceptable features or for retrieval of information / programs during the examination.

2.5 Access Arrangements

- Access Arrangements (AAs) are granted to candidates with specific learning and/or physical needs that have been diagnosed before the candidates' examinations, to enable them to sit for their examinations without compromising the assessment objectives. AAs are not intended to give a candidate an unfair advantage over other candidates in the same examination.
- Your school would have assisted you in applying for AAs for the 2021 PSLE for any existing conditions that you may have, by the closing date in January 2021. You can expect to receive your AA outcome letter through your school in about three months after the submission of your application. If you have not received the letter after this period, please approach your school for assistance.
- You should bring along and show the approved AA outcome letter to the examination personnel before the start of each of your examination.
- If you wish to withdraw the granted AAs, a letter of withdrawal is required from your parent / guardian, and it must be submitted through the school to SEAB, at least five days before the date of the examination that the AA has been applied for. SEAB will not reinstate the provision of an AA once it has been withdrawn.

- Your result slip and examination certificate will be annotated if you have any of the approved AAs listed below. Your result slip and examination certificate will still be annotated even if you did not make use of the approved AAs during the PSLE, and if you did not submit your withdrawal request by the stipulated deadline.
 - Extra time allowance (including preparation time for Oral examination);
 - Exemption from a component e.g. Oral, Listening Comprehension;
 - Modification of examination papers;
 - Use of word processor facilities and other computer aids;
 - Use of reader; and
 - Use of scribe.

Note: Other approved AA provisions will not be annotated.

2.6 Annotation Symbols

- There are three types of annotation symbols. The explanations for the symbols are provided on the back of the result slip and examination certificate.
 - **Exemption Symbol (#)**

'The candidate was exempted from satisfying the full range of assessment objectives in this subject.'

- **Access Arrangement Symbol (+)**

‘The candidate sat the paper under Access Arrangements.’

- **Absent Without Valid Reason Symbol (*)**

‘The candidate was absent for the subject without a valid reason.’

2.7 Instructions for Unexpected Situations



If you are hospitalised or are suffering from a contagious disease, necessary arrangements will be made, provided that:

- **you have been certified medically fit to sit for the examination,**
- **you have informed your school,**
- **sufficient time is given to make the necessary arrangements**

and subject to prevailing conditions related to Covid-19.

If you are **hospitalised**, your school will make arrangements for you to sit your examination in the hospital.

If you are **recovering from a contagious disease** (e.g. chickenpox or Hand, Foot & Mouth Disease) and are certified medically fit to take the PSLE, your school will

make arrangements for you to sit the examination in a separate room.

If you are **not feeling well** and are **not able to sit for the examination**, please inform your school before the examination for advice.

3. RESULTS & CERTIFICATES

3.1 PSLE Results Release

- The tentative dates for the release of the 2021 PSLE results are between 22 and 26 November 2021.

3.2 Result Slips and Certificates

- You will receive your PSLE result slip and examination certificate through your school.
- You will receive your PSLE examination certificate if you are awarded a grade for at least one PSLE subject. Ungraded subjects are not reflected in the examination certificate.
- If SEAB suspects that any examination rule or regulation has been breached, SEAB may withhold your result slip and examination certificate, pending the outcome of the investigation. Following the investigation, a decision will be made on whether to issue your result slip and examination certificate to you.

- The PSLE grades that you can be awarded with are as follows:

SUBJECT	RESULT
English Language	Achievement Level (AL): 1, 2, 3, 4, 5, 6, 7, 8 (AL 1 is the highest and AL 8 the lowest)
Chinese / Malay / Tamil Language	
Bengali / Gujarati / Hindi / Panjabi / Urdu Language	
Mathematics	
Science	
Foundation English Language	Achievement Level (AL): A, B, C (AL A is the highest and AL C the lowest)
Foundation Chinese / Malay / Tamil Language	
Foundation Bengali / Gujarati / Hindi / Panjabi / Urdu Language	
Foundation Mathematics	
Foundation Science	
Higher Chinese / Higher Malay / Higher Tamil Language	Distinction, Merit, Pass, Ungraded

- The PSLE score of a candidate is derived from his/her overall performance in all subjects taken except Higher Chinese / Higher Malay / Higher Tamil Language.
- The personal particulars printed on your examination certificate are based on the particulars that were reflected on the registration slip, which your parent / guardian had verified during your PSLE registration.

- Any request for a reprint of your examination certificate due to an amendment of your personal particulars must be made through your school by **17 December 2021**. Requests received after the deadline may not be considered.
- An administrative charge of S\$50 is payable for each request.
- The original examination certificate must be returned to the school in exchange for the reprinted examination certificate.
- SEAB does not issue duplicate copies of the result slip and examination certificate. A Statement of Results (SOR) is available instead.
- A fee is chargeable for each SOR.
- For purchase of SORs, you may visit SEAB website at <https://www.seab.gov.sg/home/services/purchase-of-statements-of-results>.

3.3 Withdrawal from PSLE

- If you have withdrawn from the PSLE, you will not be issued with any result slip or examination certificate.
- You will not be entitled to any refund of the examination fees that have been paid.

3.4 Appeal for Review of PSLE Results

- If you wish to appeal for a review of your PSLE results, you must submit your request through your **Principal**.
- **An appeal fee will be charged** for each subject.
- Your appeal must reach SEAB through the school **within one week from the date of release of the PSLE results**.
- Appeals received after the deadline will not be considered.

3.5 Ownership of All Documents Issued to Candidates

- All documents issued to candidates, including but not limited to the result slips and examination certificates, are the property of SEAB and are provided to candidates on condition of strict compliance with the Examination Instructions and Regulations contained in this booklet.
- SEAB may recall any issued documents from any candidate at any time in its sole discretion. This includes, but is not limited to, the discovery of a candidate's breach of the examination rules and regulations.
- Candidates shall comply with any demand or direction by SEAB to submit or surrender documents to SEAB without delay.

Annex A: 2021 PSLE Timetable

Oral Examination

Date	Paper	Time
Thursday, 12 August	English Language Foundation English Language Chinese Language Malay Language Tamil Language	0800 – 1315 h
Friday, 13 August	English Language Chinese Language Malay Language Tamil Language Foundation Chinese Language Foundation Malay Language Foundation Tamil Language Bengali Language Gujarati Language Hindi Language Panjabi Language Urdu Language Foundation Bengali Language Foundation Gujarati Language Foundation Hindi Language Foundation Panjabi Language Foundation Urdu Language	0800 – 1315 h

Listening Comprehension Examination

Date	Paper	Time
Friday, 17 September	Chinese Language Malay Language Tamil Language	0900 – 0935 h*
	Foundation Chinese Language Foundation Malay Language Foundation Tamil Language	0900 – 0940 h*
	Bengali Language Gujarati Language Hindi Language Panjabi Language Urdu Language Foundation Bengali Language Foundation Gujarati Language Foundation Hindi Language Foundation Panjabi Language Foundation Urdu Language	0900 – 0930 h*
	English Language Foundation English Language	1115 – 1150 h*

* Actual duration may differ slightly.

Written Examination

Date	Paper	Time	Duration
Thursday, 30 September	English Language Paper 1	0815 – 0925 h	1h 10min
	English Language Paper 2	1030 – 1220 h	1h 50min
	Foundation English Language Paper 1	0815 – 0925 h	1h 10min
	Foundation English Language Paper 2	1030 – 1150 h	1h 20min

Date	Paper	Time	Duration
Friday, 1 October	Mathematics Paper 1	0815 – 0915 h	1h
	Mathematics Paper 2	1030 – 1200 h	1h 30min
	Foundation Mathematics Paper 1	0815 – 0915 h	1h
	Foundation Mathematics Paper 2	1030 – 1130 h	1h
Monday, 4 October	Chinese Language Paper 1 Malay Language Paper 1 Tamil Language Paper 1 Bengali Language Paper 1 Gujarati Language Paper 1 Hindi Language Paper 1 Panjabi Language Paper 1 Urdu Language Paper 1	0815 – 0905 h	50min
	Chinese Language Paper 2 Malay Language Paper 2 Tamil Language Paper 2 Bengali Language Paper 2 Gujarati Language Paper 2 Hindi Language Paper 2 Panjabi Language Paper 2 Urdu Language Paper 2	1015 – 1155 h	1h 40min
	Foundation Chinese Language Paper 1 Foundation Malay Language Paper 1 Foundation Tamil Language Paper 1	0815 – 0855 h	40min

Date	Paper	Time	Duration
Tuesday, 5 October	Science	0815 – 1000 h	1h 45min
	Foundation Science	0815 – 0930 h	1h 15min
Wednesday, 6 October	Higher Chinese Language Paper 1 Higher Malay Language Paper 1 Higher Tamil Language Paper 1	0815 – 0905 h	50min
	Higher Chinese Language Paper 2 Higher Malay Language Paper 2 Higher Tamil Language Paper 2	1015 – 1135 h	1h 20min

PSLE Marking Exercise

The 2021 PSLE Marking Exercise is scheduled from 18 to 21 October 2021. All primary schools will be closed during this period to facilitate the conduct of the marking exercise.

Annex B: List of Approved Dictionaries

Approved Chinese Dictionaries

S/N	TITLE	PUBLISHER	ISBN NUMBER	APPROVED PERIOD
1	新编学生实用词典（第七版增订本）	新亚出版社	981-255-911-6 978-981-255-911-1	2019 – 2023
2	新编小学实用词典	新亚出版社	981-274-954-3 978-981-274-954-3	2019 – 2023
3	最新汉语大词典（第5版）	联营出版（马）有限公司	978-983-01-1073-8 978-983-01-1122-3	2018 – 2022
4	全球华语大词典	Marshall Cavendish Education Pte Ltd	978-981-4684-38-5	2018 – 2022
5	世纪版新汉语字典	联营出版（马）有限公司	978-983-01-0961-9	2017 – 2021
6	规范汉语词典	联营出版（马）有限公司	978-983-820-627-3	2017 – 2021
7	最新规范汉语词典（修订版）	联营出版（马）有限公司	978-983-01-0960-2	2017 – 2021
8	最新汉语大词典(世纪版)	联营出版（马）有限公司	983-820-625-3 983-820-626-1	2017 – 2021
9	新世纪高级学习词典	怡学出版社·商务印书馆	978-981-4333-25-2	2017 – 2021
10	新世纪学生华语词典	怡学出版社·商务印书馆	978-981-4237-75-8	2021 – 2025

Approved Chinese e-Dictionaries

S/N	NAME & MODEL	PUBLISHER	APPROVED PERIOD
1	Besta All Pass 1	Ellton Enterprise Pte Ltd	2020 – 2024
2	Besta All Pass S1	Ellton Enterprise Pte Ltd	2020 – 2024
3	Besta All Pass 5	Ellton Enterprise Pte Ltd	2020 – 2024
4	HansVision PX2201	Creative Knowledge Labs Pte Ltd	2021 – 2025
5	HansVision PX2181	Creative Knowledge Labs Pte Ltd	2021 – 2025
6	HansVision PX2131	Creative Technology Ltd / Creative Knowledge Labs Pte Ltd	2021 – 2025
7	HansVision PX2101	Creative Technology Ltd / Creative Knowledge Labs Pte Ltd	2021 – 2025
8	HansVision PX2051	Creative Technology Ltd / Creative Knowledge Labs Pte Ltd	2021 – 2025
9	ZZ.New-A+	ZZ.Perfection Pte Ltd	2018 – 2022
10	Besta All Pass 2	iKnow Pte Ltd	2017 – 2021
11	Besta All Pass 3	iKnow Pte Ltd	2017 – 2021
12	ZZ.New-01	ZZ Perfection Pte Ltd	2017 – 2021

Previously Approved Chinese Dictionaries*

S/N	TITLE	PUBLISHER	ISBN NUMBER
1	华语规范字典	胜利出版私人有限公司	9971-61-969-5
2	华语规范词典	胜利出版私人有限公司	981-237-067-6
3	规范汉语词典	联营出版有限公司	983-820-627-X
4	时代商务馆学华语词典	新加坡泛太平洋教育出版社	978-981-271-770-2
5	新汉语字典	联营出版有限公司	9789830102160 9789830109619
6	新华现代汉语词典	思达出版有限公司 商务印书馆国际有限公司	981-4176-11-7
7	新世纪学生新词典	怡学出版社·商务印书馆	981-4133-55-8 978-981-4133-55-5
8	新世纪高级汉语词典	怡学出版社·商务印书馆	981-4070-36X 981-4133-40X 978-981-4133-40-1
9	现代汉语词典(第五版)	商务印书馆	7-100-04385-9 978-7100-04385-4
10	最新规范汉语词典	联营出版有限公司	983-820-865-5 9789830109602
11	最新汉语大词典(世纪版)	联营出版有限公司	983-820-625-3 983-820-626-1
12	实用汉语词典	胜利书局	9971-61-513-4
13	时代新汉语词典	联邦出版社, 华语教学出版社	981-01-8-720-3
14	现代汉语新词典	商务印书馆	981-009-289X 978-981-009-289-4
15	现代汉语小词典(增补本)	朗文出版有限公司, 商务印书馆	978912475343
16	现代华语词典	上海书局(私人)有限公司	9971-906-91-0
17	现代华语词典(修订版)	中图上海书局	981-04-5989-0 983-2594-02-2

S/N	TITLE	PUBLISHER	ISBN NUMBER
18	现代实用汉语词典	联营出版有限公司	983-820-863-9 983-820-864-7
19	新华字典 (第十版)	商务印书馆	7-100-03974-1 978-7100-03974-1 7-100-03931-2 978-7100-03931-4
20	新汉语词典	联营出版有限公司	967-9985-92-X
21	新编学生词典	上海书局	997190672
22	新世纪汉语词典	怡学出版社·商务印书馆	981-4070-661 978-981-4070-66-9
23	最新学生词典	联营出版有限公司	967-9985-78-4

Previously Approved Chinese e-Dictionaries*

S/N	NAME & MODEL	PUBLISHER
1	Besta All Pass-1	Besta DigiTech Pte Ltd
2	Besta New All Pass-1	iKnow Pte Ltd

Approved Malay Dictionaries

S/N	TITLE	PUBLISHER	APPROVED PERIOD
1	Kamus Dewan (Edisi Keempat)	Dewan Bahasa dan Pustaka	2017 – 2021
2	Kamus Pelajar Bahasa Melayu Dewan (Edisi Kedua)	Dewan Bahasa dan Pustaka	2017 – 2021
3	Kamus Pelajar Bahasa Malaysia (Edisi Kedua)	Dewan Bahasa dan Pustaka	2017 – 2021
4	Kamus Komprehensif Bahasa Melayu	Oxford Fajar Sdn. Bhd.	2017 – 2021

Approved Malay e-Dictionaries

S/N	NAME & MODEL	PUBLISHER	APPROVED PERIOD
1	Global Translator / Model M188 e-dictionary (Kamus Bimbit Elektronik Riang Ria)	EDN-Media Consultant Pte Ltd	2021 – 2025

Previously Approved Malay Dictionaries*

S/N	TITLE	PUBLISHER
1	Kamus Dewan (Edisi Kedua)	Dewan Bahasa dan Pustaka
2	Kamus Dewan (Edisi Ketiga)	Dewan Bahasa dan Pustaka
3	Kamus Pelajar (Terbitan KBSM)	Dewan Bahasa dan Pustaka
4	Kamus Pelajar (Terbitan Khas KBSM)	Dewan Bahasa dan Pustaka
5	Kamus Pelajar Bahasa Malaysia (Terbitan Khas KBSM)	Dewan Bahasa dan Pustaka

Approved Tamil Dictionaries

S/N	TITLE	PUBLISHER	APPROVED PERIOD
1	Lakshmi's Learners' Tamil Language Dictionary (Revised Edition) ISBN 978-981-08-6695-2	Lakshmi Publications, Singapore	2021 – 2025
2	Uma Natramil Peragaraathi (Revised Edition) ISBN 978-967-434-270-8	Uma Publications, Kuala Lumpur	2019 – 2023

Previously Approved Tamil Dictionaries*

S/N	NAME & MODEL	PUBLISHER
1	Lakshmi's Learners' Tamil Language Dictionary	Lakshmi Publications, Singapore
2	Puthiya Tamil Akaraathi (New Tamil – Tamil Dictionary)	Uma Publications, Kuala Lumpur
3	Tamil – Tamil Akara Muthali (M Shanmugam Pillai)	Government of Tamilnadu Textbook Committee
4	Kriyavin Tarkalat Tamil Akarati (Tamil – Tamil Version only) ISBN 978-81-85602-91-2	Cre-A Publishers, Chennai
5	Kazhakat Tamil Akaraathi (Tamil – Tamil Dictionary)	The South India Saiva Siddhanta Works Publishing Society, Tinnevely Limited, Chennai
6	Kazhakat Tamil Kaiyakaraathi (Tamil – Tamil Dictionary)	The South India Saiva Siddhanta Works Publishing Society, Tinnevely Limited, Chennai

*All previously approved dictionaries, including those that no longer appear on the current approved list, can continue to be used for the national examinations unless there is a change in policy, syllabus or examination format. Under any of these situations, the Singapore Examinations and Assessment Board (SEAB) may withdraw the approval for use of these dictionaries in the examinations.

Annex C: List of Approved Scientific Calculators

The following models of scientific calculators are suitable for PSLE Mathematics and Foundation Mathematics examinations.

S/N	Calculator Brand	Calculator Model	Approved Period [†]
1	CASIO	FX 82MS	2003 – 2021
2		FX 85MS	2003 – 2021
3		FX 95MS	2003 – 2021
4		FX 96SG Plus	2013 – 2025
5		FX 97SG X	2018 – 2022
6		FX 350MS	2003 – 2021
7	CANON	F-960SG	2017 – 2021
8	SHARP	EL W531S	2010 – 2023
9		EL W531S II ^	2018 – 2022
10		EL W531S II Silver Edition	2021 – 2025
11		EL W531XM	2014 – 2023
12		EL 533X	2013 – 2024

^ If you are using the calculator model SHARP EL W531S II, you are required to reset your calculator before the examination. To reset the calculator, switch off the calculator and press the reset button on the back of the calculator. The calculator will switch on automatically if the reset is done successfully.

Previously Approved Scientific Calculators that still can be used¹

Brand : CASIO

FX 82AU	FX 100C	FX 350TL	FX 911S
FX 82C	FX 100D	FX 350TLG	FX 911SA
FX 82D	FX 100S	FX 350W	FX 911W
FX 82L	FX 100V	FX D400	FX 911Z
FX 82LB	FX 100Z	FX 451M	FX 991D
FX 82SUPER	FX 115D	FX 500MS	FX 991N
FX 82SX	FX 115N	FX 570AD	FX 991S
FX 82TL	FX 115S	FX 570AV	FX 991V
FX 82W	FX 115V	FX 570CD	FX 992S
FX 85N	FX 135	FX 570CV	FX 992V
FX 85S	FX 350C	FX 570S	FX 992VB
FX 85V	FX 350D	FX 570Z	
FX 85VH	FX 350HA	FX 820MS	
FX 95 SG Plus	FX 350HB	FX 901	

Brand : CANON

F 200	F 500	F 601	F 612
F 401	F 501	F 602	F 715S
F 402	F 502	F 604	F 720

¹ All previously approved calculator models, including those that no longer appear on the current approved list, can continue to be used for all national examinations unless there is a change in policy, syllabus or examination format. Under any of these situations, the Singapore Examinations and Assessment Board (SEAB) may withdraw the approval for use of these calculators in the examinations.

Brand : SHARP

EL 506L	EL 509WM	EL 531P	EL 546LV
EL 509G	EL 509WS	EL 531RH	EL 546VA
EL 509L	EL 509X	EL 531V	EL 553
EL 509MS	EL 510R	EL 531VB	EL 556G
EL 509R	EL 520G	EL 531VH	EL 556L
EL 509V	EL 520L	EL W531M	
EL 509VM	EL 531GH	EL 546G	
EL 509W	EL 531LH	EL 546L	

Brand : TEXAS INSTRUMENTS

BA II PLUS	TI 30XA	TI 30XSOLAR	TI 35X
BA REAL ESTATE		TI 32 EXPLORER PLUS	
BA 35 SOLAR	TI 30XIIB	TI 34	TI 36XSOLAR
TI 25 STAT	TI 30XIIS	TI 34II	
TI 30X	TI 30 CHALLENGER		

Brand : HEWLETT PACKARD

HP 6S	HP 8S	HP 10B	HP 10S+
HP 6S SOLAR	HP 9S	HP 10S	HP 14B

Brand : AURORA

SC 110	SC 170	SC 260
SC 120	SC 200	SC 500
SC 150	SC 210	SC 550

Brand : FIAMO

SC 6	SC 20
------	-------

Brand : HOSEKI

H 1030	H 1031
--------	--------

Brand : HUBBLE COMPUTING

SC 10B	SC 10C
--------	--------

Brand : KARCE

KC107	KC109	KC S3500
KC108	KC S187	

Annex D: Checklist for PSLE

CHECKLIST

- Have you read through the examination regulations?
- Have you allocated sufficient travelling time to your school so that you can report at least 30 minutes before the start of your examination?
- Have you brought all the necessary items that you need to sit for the examination?
- Have you read Annex D1 to ensure that the items you brought are allowed for use during the examination?
- Have you read the DOs and DON'Ts in Annex D2 for the examinations?



Annex D1: Items allowed and not allowed for use during the examination

Items allowed	Items <u>not</u> allowed
<ul style="list-style-type: none"> • Stationery such as 2B pencils, soft erasers, sharpeners, blue / black ballpoint pens • Standard mathematical instruments such as rulers, protractors, set-squares • Approved scientific calculators (only for Mathematics / Foundation Mathematics Paper 2) • Approved printed / electronic dictionaries (only for MTL / Higher MTL / NTIL Composition Papers) • Spare set of batteries for calculators / electronic dictionaries 	<ul style="list-style-type: none"> • Electronic / communication / entertainment / gaming devices • Study notes / books / paper • Instruction leaflets containing mathematical formula / conversion table / instructions • Non-standard mathematical instruments e.g. model rulers • Calculators or electronic dictionaries with unacceptable features



This checklist is not exhaustive and serves only as a guide. You are advised to read the instructions booklet thoroughly before sitting for your examinations.

Annex D2: DOs and DON'Ts for the examinations

To ensure that your responses are captured or read clearly during marking, you should take note of the following Dos and Don'ts:

DOs

OPTICAL ANSWER SHEETS (OAS)

- Use a 2B pencil to shade the ovals.
- Shade the oval completely.
- Erase completely your wrongly shaded ovals or any unnecessary marks.



ANSWER BOOKLET / ANSWER SHEET FOR WRITTEN PAPERS

- Use a 2B pencil to shade your multiple-choice questions (MCQ) ovals.
- Write your answers clearly with a blue or black ballpoint pen with 0.5mm tip size within the writing space provided.
- Cancel your errors made by crossing out your wrong word / sentence clearly.
- Erase completely your wrongly shaded MCQ ovals or any unnecessary marks outside the provided writing space.

DON'Ts



⊗ **DON'T** write your answers with pencil.

⊗ **DON'T** use correction fluid or correction tape to avoid smudges.

⊗ **DON'T** crumple, fold, tear, wet or damage your OAS, answer booklet/ answer sheet in any way.

⊗ **DON'T** use a highlighter to highlight any part of your answer.

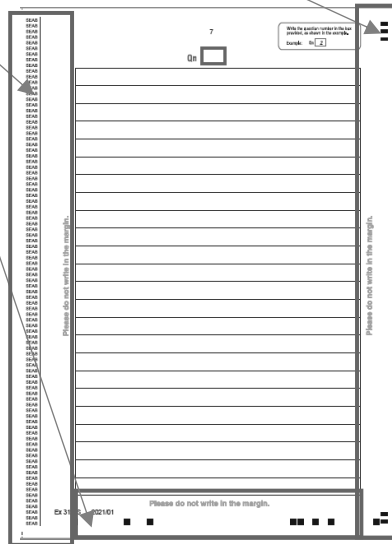
⊗ **DON'T** make any unnecessary markings (e.g. write, draw, shade, etc) on any part of the OAS / answer booklet / answer sheet, other than on the ovals / writing space provided.

⊗ **DON'T** deface (e.g. shade, colour, write, etc) the barcodes, QR Codes and skunk marks printed on the OAS / answer booklet / answer sheet.

DON'Ts



⊗ **DON'T** write answers too close to the markings and spine.



2021 PRIMARY SCHOOL LEAVING EXAMINATION

NON-TAMIL INDIAN LANGUAGES (NTIL) (Bengali, Gujarati, Hindi, Panjabi, Urdu) (Standard / Foundation)

ADDITIONAL INSTRUCTIONS FOR CANDIDATES SITTING THE NTIL EXAMINATIONS

- 1 This handout is to be used in conjunction with the “Instructions for Candidates” booklet. You are to be familiar with all the instructions in both the booklet and this handout and comply with the instructions.
- 2 The PSLE NTIL (Bengali, Gujarati, Hindi, Panjabi or Urdu) examinations consist of four papers:
 - i) Paper 1 (Writing)
 - ii) Paper 2 (Language Use and Comprehension)
 - iii) Paper 3 (Listening Comprehension)
 - iv) Paper 4 (Oral)
- 3 For the PSLE NTIL Paper 1 examination, you are permitted to use a monolingual dictionary which must be free of annotations.
- 4 Paper 2 is organised into two booklets (Booklet A and Booklet B). Booklet A consists of multiple-choice questions. You should choose the most appropriate option for each question and shade your answer on the Optical Answer Sheet (OAS). Booklet B consists of open-ended items. You should write the answers in the booklet itself.
- 5 If you offer Foundation Bengali, Foundation Gujarati, Foundation Hindi, Foundation Panjabi or Foundation Urdu, you will only sit for Paper 3 (Listening Comprehension) and Paper 4 (Oral).
- 6 Please refer to Annex-NTIL for the detailed arrangements for the Oral Examination.

**2021 PRIMARY SCHOOL LEAVING EXAMINATION
ENGLISH LANGUAGE AND NON-TAMIL INDIAN LANGUAGES**

ORAL EXAMINATION

- 1 The PSLE Oral Examination for pupils offering Non-Tamil Indian Languages (NTIL) will be conducted on the following days in your own school:

<u>Subject</u>	<u>Date</u>
English Language / Foundation English	Thursday, 12 August
Non-Tamil Indian Languages	Friday, 13 August

You are to be present for the examinations on both days.

- 2 Please check with your school for the reporting time on each examination day.
- 3 The NTIL Oral Examination consists of three parts:
- a) Reading Aloud
 - b) Picture Description
 - c) Picture Interpretation/Explanation

During the Silent Preparation, you will be given five minutes to read a passage silently and to study a picture before the examination. In the examination room, you will first start with the Reading Aloud, then move on to the Picture Description, followed by Picture Interpretation/Explanation.

4. As the NTIL Oral Examination will be recorded, you **must** follow very closely to all the instructions given to you during the examination.

**SINGAPORE EXAMINATIONS AND ASSESSMENT BOARD
MARCH 2021**