



MINISTRY OF EDUCATION, SINGAPORE  
in collaboration with  
CAMBRIDGE ASSESSMENT INTERNATIONAL EDUCATION  
General Certificate of Education Advanced Level  
Higher 1

---

# GEOGRAPHY

**8834/01**

Paper 1

**For examination from 2024**

SPECIMEN INSERT

**3 hours**

---

## READ THESE INSTRUCTIONS FIRST

This Insert contains all the Resources referred to in the questions.

---

This document consists of **10** printed pages.



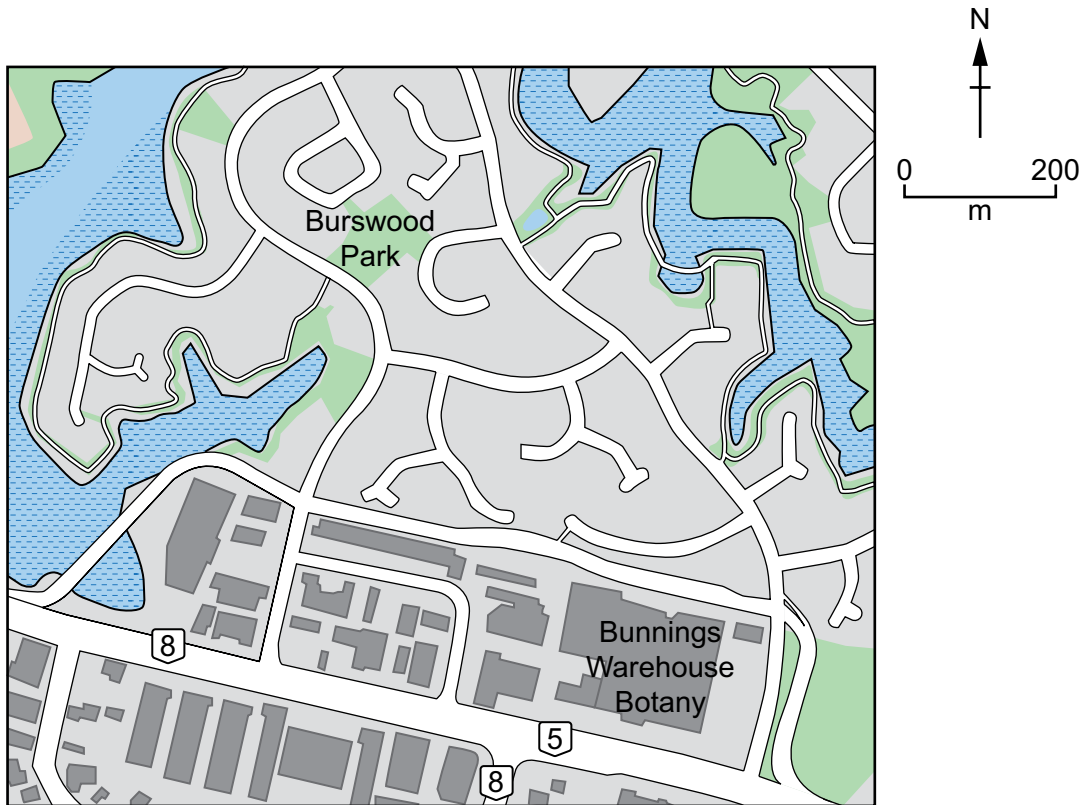
Singapore Examinations and Assessment Board




Cambridge Assessment  
International Education

Resource 1 for Question 1


Map of Burswood, Auckland



**Key**


 major roads

land use

 residential

 park

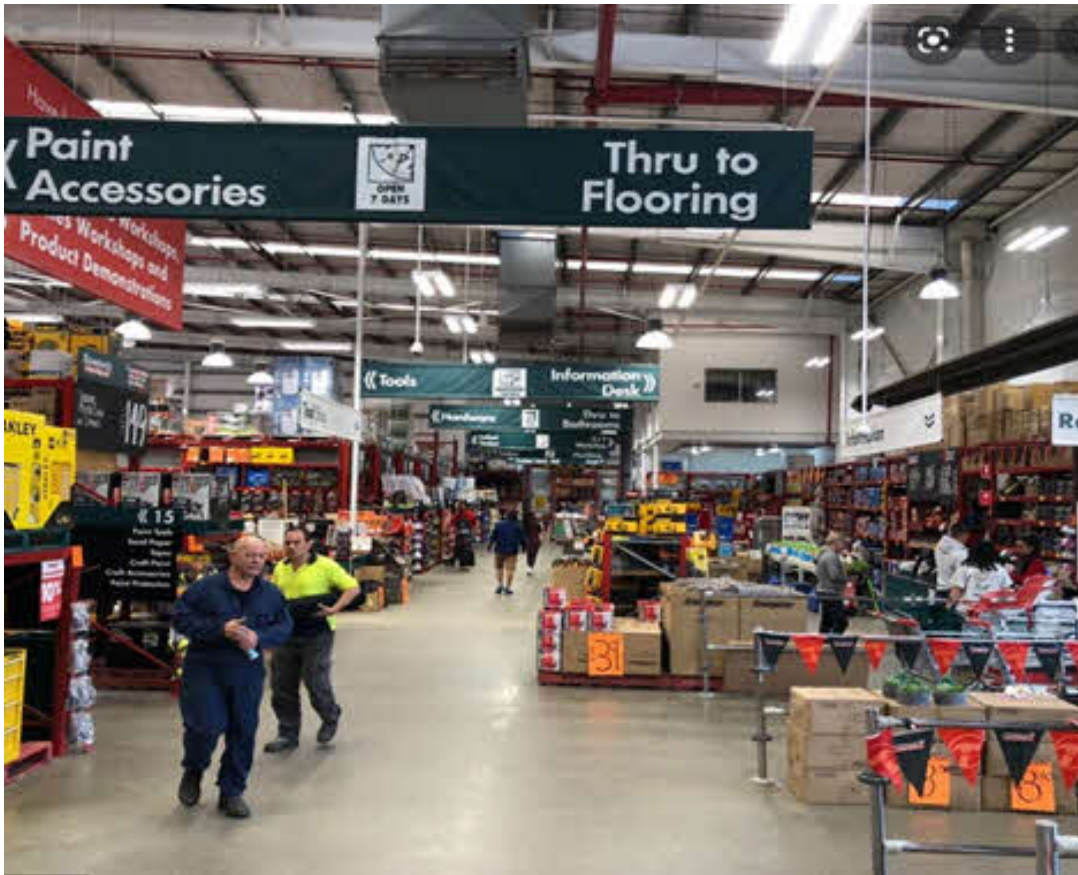
 river

 commercial (shops/warehouses)

Resource 2 for Question 1

Photographs of Bunnings Warehouse Botany and Burswood Park

Bunnings Warehouse Botany



Burswood Park



## Resource 3 for Question 1

## Selected results of the questionnaire survey

Do you feel safe:	Very safe	Fairly safe	Neither safe nor unsafe	Fairly unsafe	Very unsafe
in your local area at night	20%	42%	20%	10%	8%
in your local area during the day	65%	25%	10%	0%	0%
in your home at night	90%	5%	0%	2%	3%
at Bunnings Warehouse Botany	82%	14%	4%	0%	0%
at Burswood Park	16%	14%	10%	42%	18%
on public transport	70%	20%	0%	10%	0%
at friends' homes	90%	10%	0%	0%	0%

## Resource 4 for Question 2

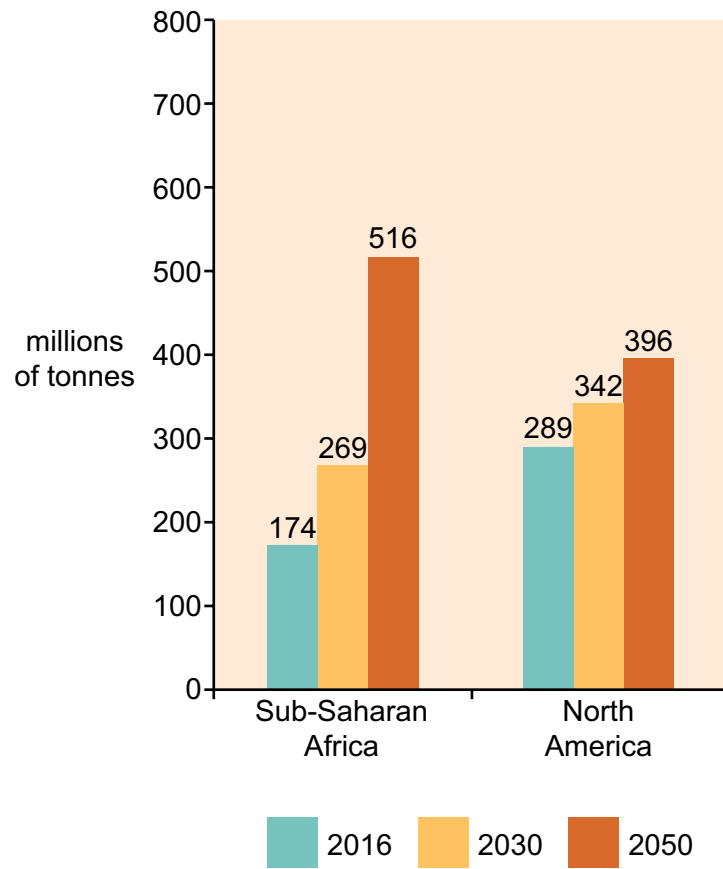
## Landfill site near Nottingham in the UK



*Landfills are open areas designated for disposing of waste. Waste buried in landfills breaks down at a very slow rate, producing high levels of methane gas and carbon dioxide, and toxic substances that leech into earth and groundwater.*

## Resource 5 for Question 2

## Non-hazardous solid waste generation by selected regions



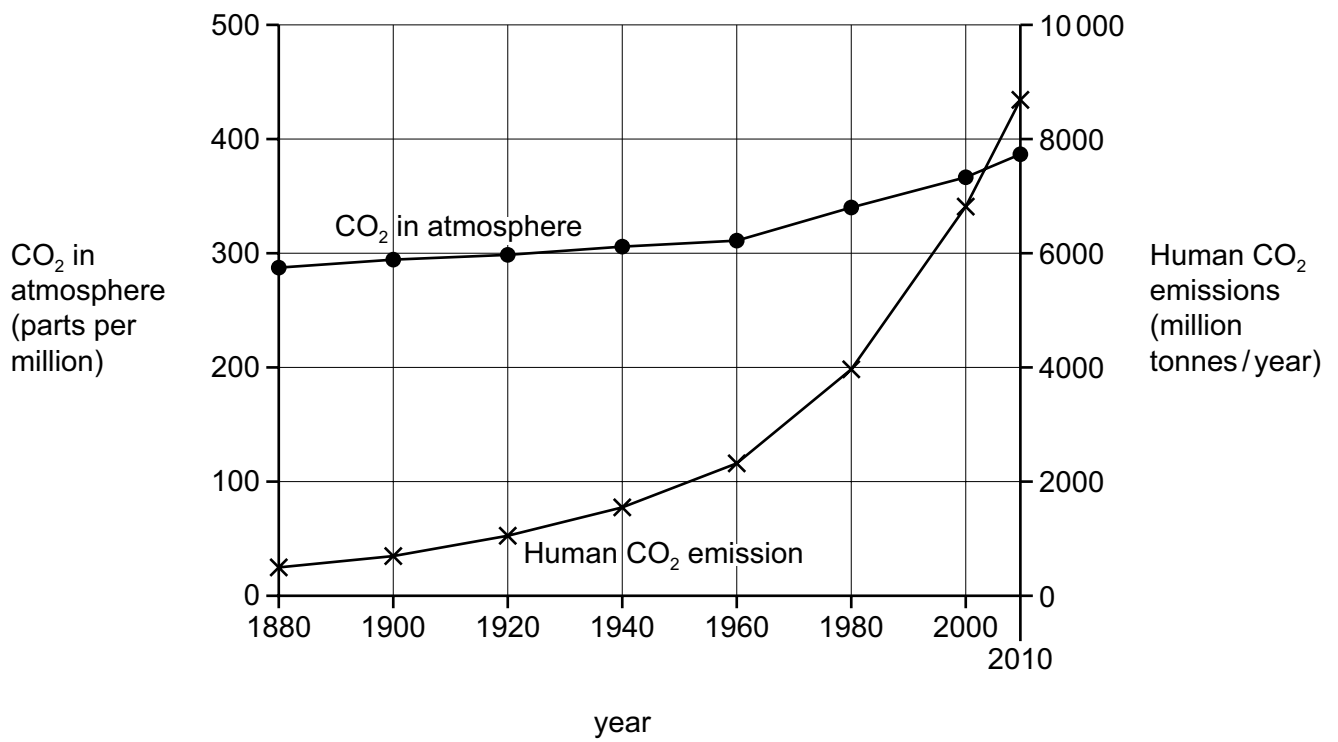
## Resource 6 for Question 2

## Fact file about Sub-Saharan Africa

	2010	2030	2050
<b>Urbanisation level (%)</b>	36	46	60
<b>Population (millions)</b>	856	1400	1950
<b>GDP per capita (US\$)</b>	1420	3200	6500
<b>Foreign Direct Investment (US\$ billions)</b>	32.8	67	95

## Resource 7 for Question 3

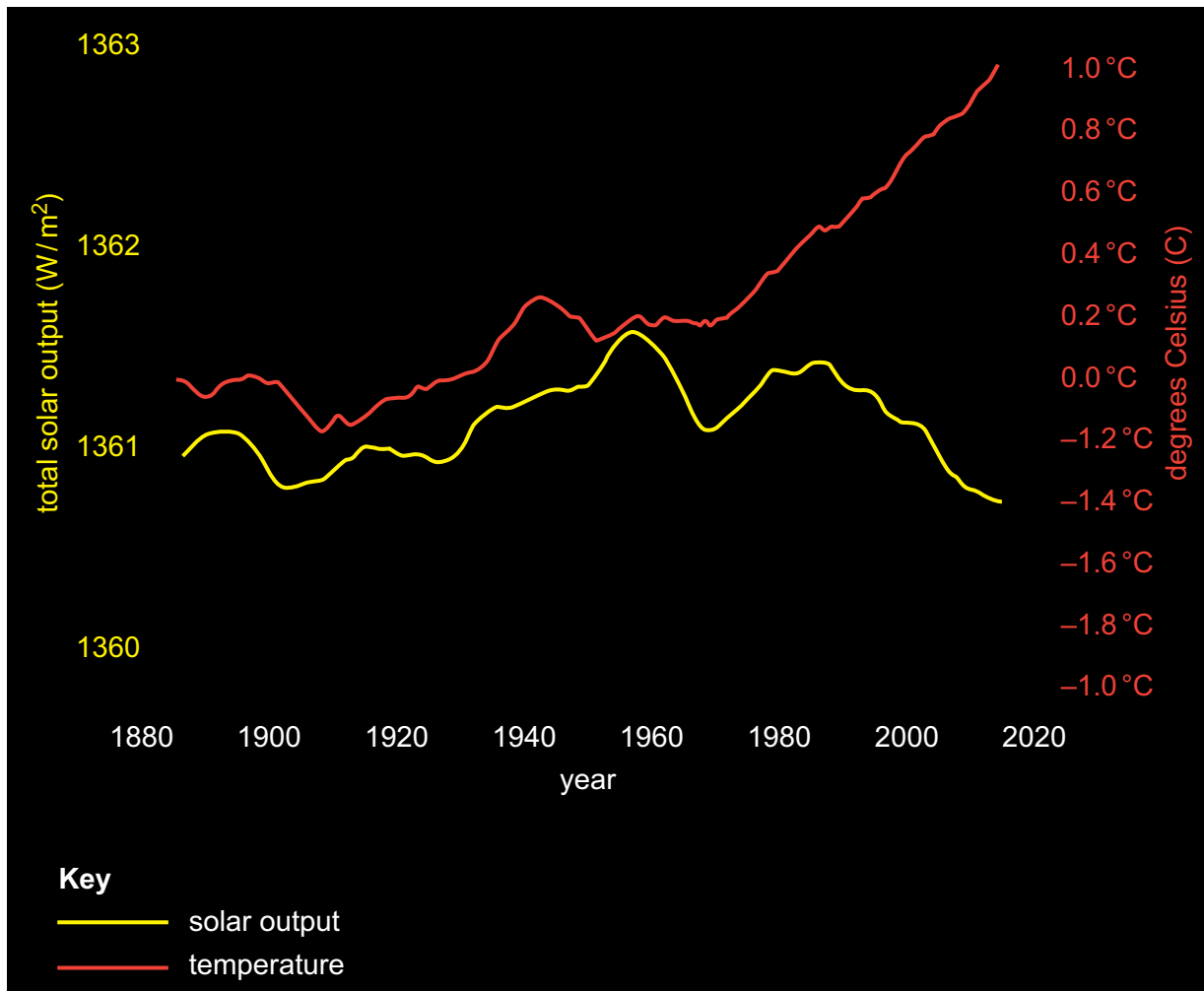
## Changes in carbon dioxide in atmosphere and human carbon dioxide emissions between 1880 and 2010





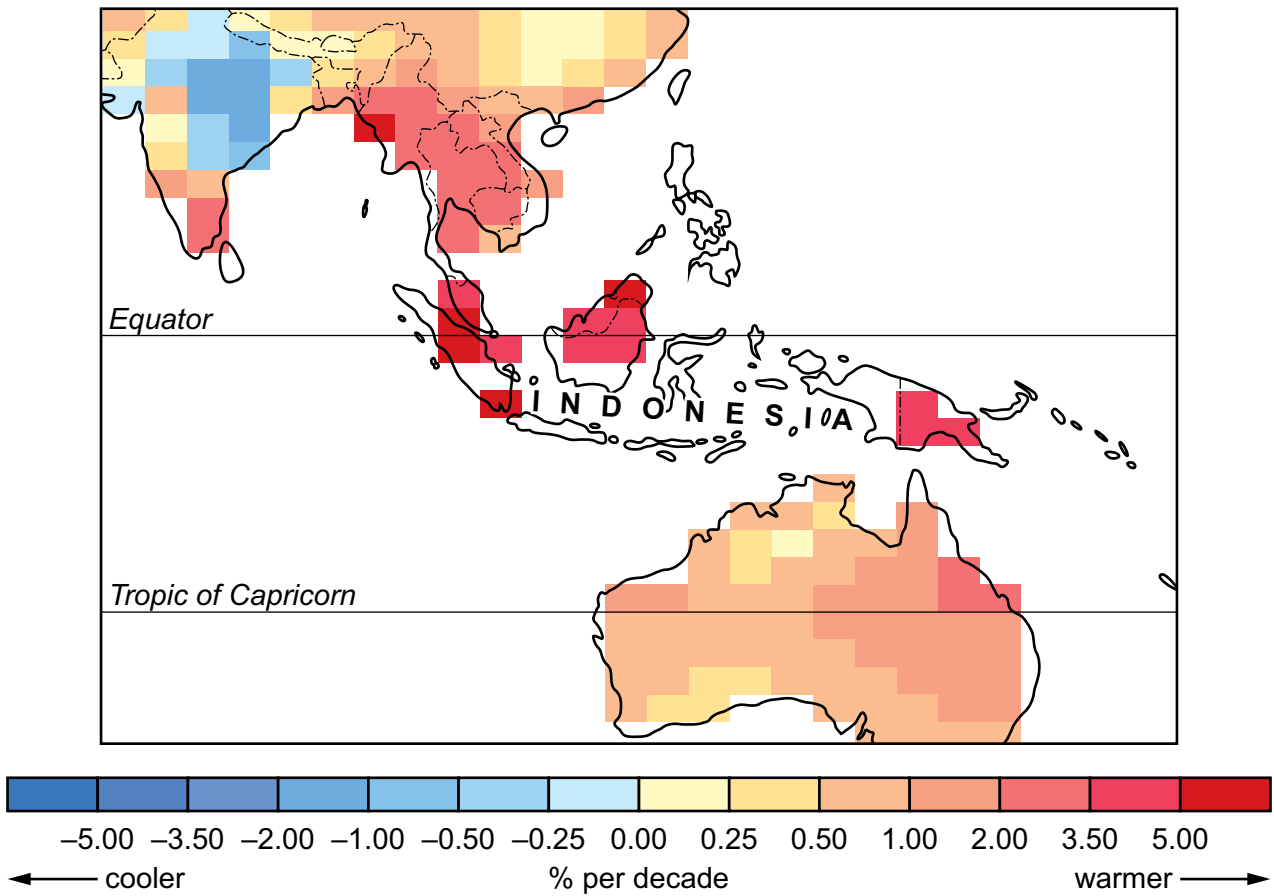
## Resource 8 for Question 3

Graph showing changes to solar output and global temperature averages



Resource 9 for Question 3

Annual average temperature change over parts of Asia-Pacific region (1968–2006) relative to the average temperature (1960–1990)



Permission to reproduce items where third-party owned material protected by copyright is included has been sought and cleared where possible. Every reasonable effort has been made by the publisher (UCLES) to trace copyright holders, but if any items requiring clearance have unwittingly been included, the publisher will be pleased to make amends at the earliest possible opportunity.

Cambridge Assessment International Education is part of Cambridge Assessment. Cambridge Assessment is the brand name of the University of Cambridge Local Examinations Syndicate (UCLES), which is a department of the University of Cambridge.