

PRIMARY SCHOOL LEAVING EXAMINATION (PSLE) 2021: STANDARDS-REFERENCED ASSESSMENT

TEST DEVELOPMENT STAGE

01



The PSLE test paper is developed based on the teaching syllabus and the Table of Specifications (TOS) for the syllabus. The TOS acts as a blueprint to ensure there is sufficient coverage of topics, skills or concepts in the test paper.

02



A professional panel of specialists with assessment and subject expertise, as well as a knowledge of the profile of the students, develop the test paper according to this blueprint.

03



The panel also ensures that the test paper has a balanced proportion of easy, average and challenging questions to cater to a range of students' abilities.

04



A provisional mark scheme is concurrently developed.

05

There are many rounds of discussion by the panel and checks by experienced senior examiners to ensure that the questions are clearly phrased. Senior examiners also check for comparability in the standard of the test paper with previous years'.

DURING THE PSLE

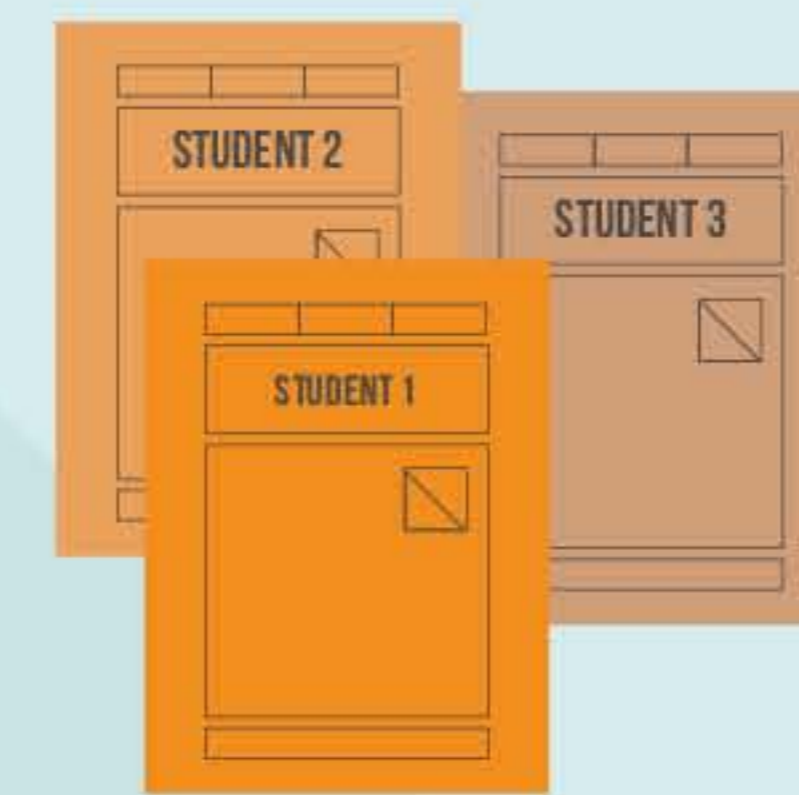


Students take the PSLE under standardised conditions.

MARKING STAGE

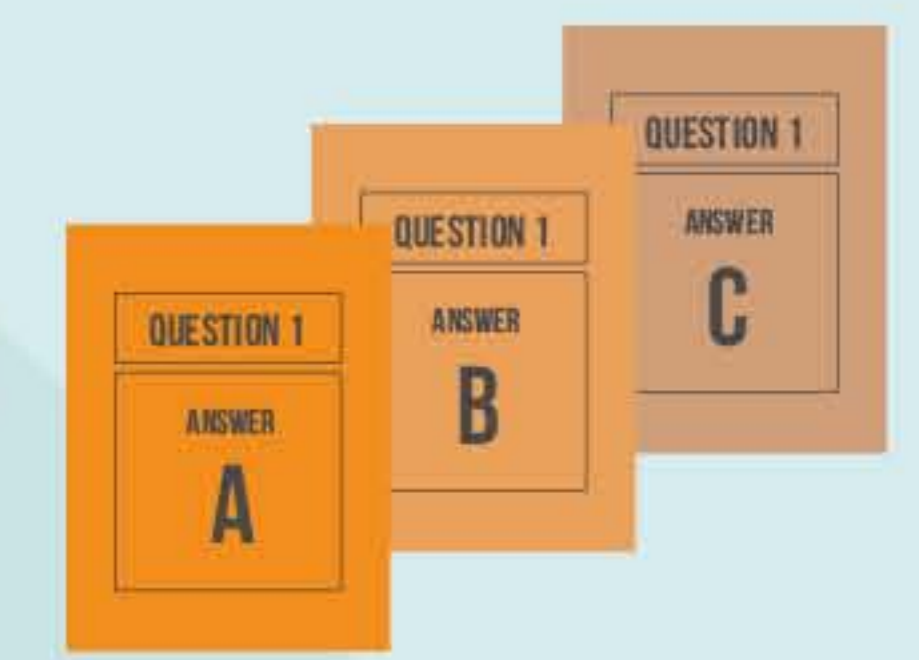
STANDARDISATION PROCESS

01



The panel samples scripts from a wide range of students' performance for a comprehensive range of responses.

02



Variations in answers and alternative responses from these sample scripts are taken into account and studied carefully against the provisional mark scheme.

03



The provisional mark scheme is refined and updated based on the representative sample of answer scripts.

04



Key Marking Personnel (KMP) made up of Principals, Vice-Principals and Heads of Department engage in rigorous discussion on the mark scheme to establish a common understanding of it.

05

KMPs apply the mark scheme on the sample scripts and practise marking them.

06

The mark scheme is further refined.

MARKING PROCESS

07



At the marking centre, the Chief Marker briefs all markers on the mark scheme and how to apply it in their marking.

08

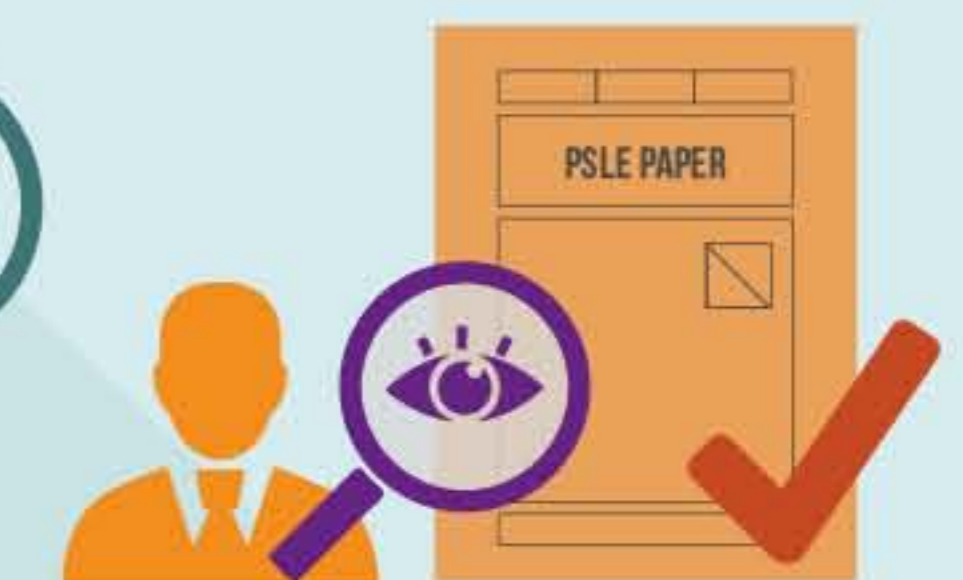
All candidates' responses are reviewed carefully by the markers. Responses which demonstrate correct understanding and application of concepts and skills relevant to the context of the question are duly awarded.

09



Marking is monitored throughout the duration of the marking.

10



KMPs at various levels of the marking structure carry out sample checks of the scripts during the marking to ensure that the answer scripts are marked accurately and consistently.

There are robust processes to maintain comparability of standards in the PSLE.