

# JOINT PRESS RELEASE



Ministry of Education  
SINGAPORE



12 January 2015

## RESULTS OF THE 2014 SINGAPORE-CAMBRIDGE GENERAL CERTIFICATE OF EDUCATION (ORDINARY LEVEL) EXAMINATION

1. A total of 30,964 school candidates sat for the 2014 Singapore-Cambridge General Certificate of Education Ordinary Level (GCE 'O' Level) Examination and 99.9% have been awarded certificates.

2. The results of the 2014 GCE 'O' Level Examination for school candidates are as follows:

Year	No. Sat	1 or more GCE 'O' Level Passes		3 or more GCE 'O' Level Passes		5 or more GCE 'O' Level Passes	
		No.	%	No.	%	No.	%
2014	30,964	30,940	99.9	29,705	95.9	25,789	83.3

3. This year, 3,949 students from the 2014 Secondary 4 Normal Academic [Secondary 4N(A)] course sat for one or more subjects in the GCE 'O' Level Examination. Of these, 87.9% have obtained at least one 'O' Level pass.

4. A total of 2,133 private candidates sat for the 2014 GCE 'O' Level Examination and 89.5% have been awarded certificates.

5. School and private candidates would be issued with a GCE 'O' Level Examination certificate if they obtain at least a Grade 6 or better in one or more subjects.

6. School candidates have been issued their results by their respective schools from 2.00 pm today. Private candidates will be notified of their individual results by post. They will also be able to access their results online (using the password provided to them) via the Singapore Examinations and Assessment Board website at <http://www.seab.gov.sg> from 2.00 pm today.

7. The Singapore-Cambridge GCE 'O' Level Examination is jointly conducted by the University of Cambridge International Examinations, the Singapore Examinations and Assessment Board and the Ministry of Education.

## **EDUCATION AND CAREER GUIDANCE (ECG) PORTAL**

8. Students, together with their parents, may wish to refer to [ecareers.sg](http://ecareers.sg) for guidance on their educational and career development options. [ecareers.sg](http://ecareers.sg) is an interactive web-based Education and Career Guidance (ECG) portal hosted by the Ministry of Education. It provides up-to-date information on the educational options and career development pathways available to students. There are various profiling instruments in the portal to help students clarify their interests and aptitudes, and point to a range of suitable career possibilities.

9. Teachers, Career Guidance Coordinators, School Counsellors, and parents are encouraged to use the ECG portal to help students clarify their career goals and guide them to choose educational courses that are suitable for them.

10. An infographic to illustrate the education pathways for 'O' Level students is attached in Annex A.

---

## **MINISTRY OF EDUCATION SINGAPORE EXAMINATIONS AND ASSESSMENT BOARD**

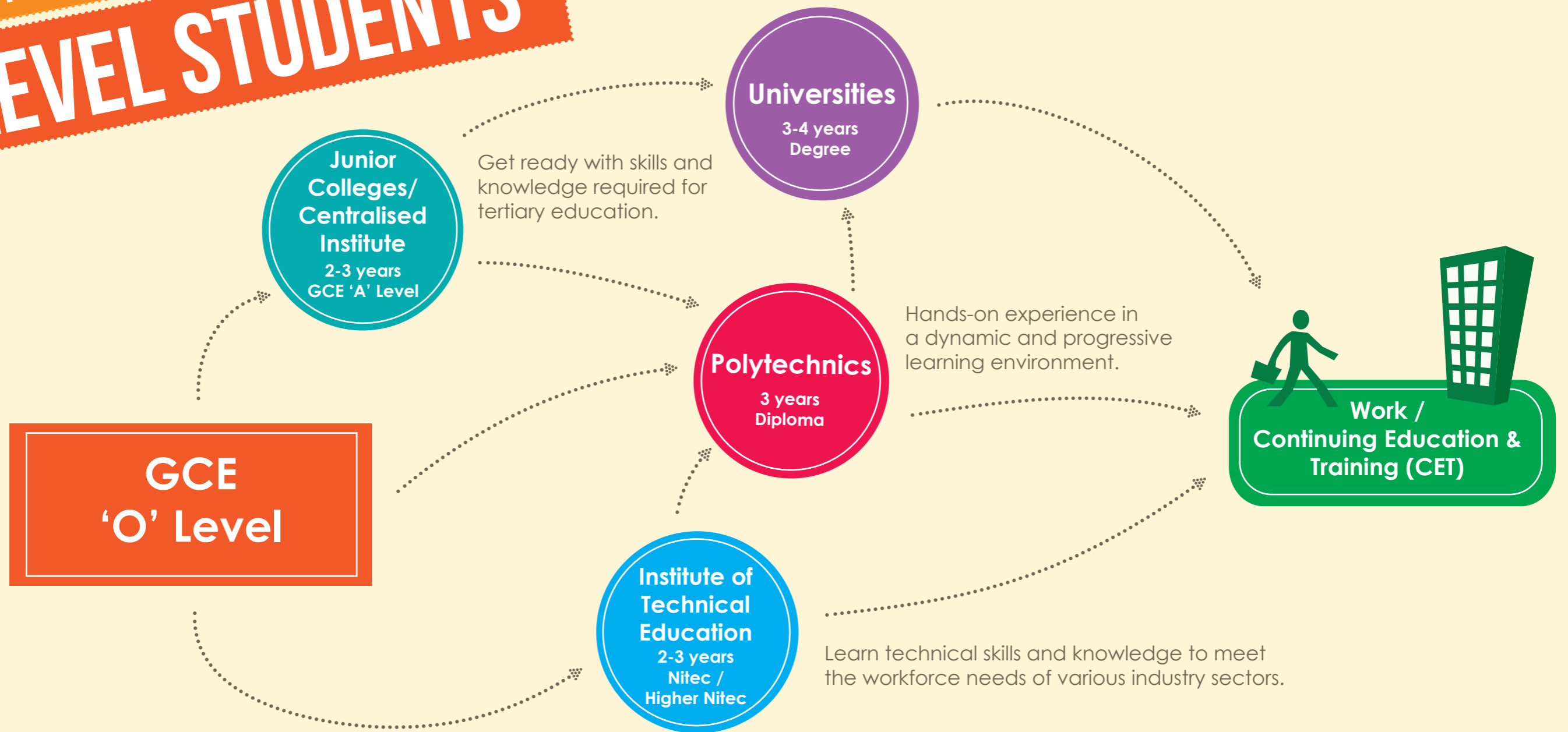
For media enquiries, please contact:

Ms Sarina Chng  
Executive, Media Relations Branch  
Communications Division  
Communications & Engagement Group  
Ministry of Education  
Tel: 6879 7605 (O) / 9837 0998 (HP)  
Email: [Sarina\\_Chng@moe.gov.sg](mailto:Sarina_Chng@moe.gov.sg)

Ms Tan Meng Lee  
Assistant Manager  
Corporate Development and Communications  
Singapore Examinations and Assessment Board  
Tel: 6377 7814 (O) / 9099 1697(HP)  
Email: [tan\\_meng\\_lee@seab.gov.sg](mailto:tan_meng_lee@seab.gov.sg)

MULTIPLE PATHWAYS FOR

# 'O' LEVEL STUDENTS



## HOW TO APPLY



**L1R5**  
AGGREGATE

20 OR LESS  
for JCs

\* Joint Admissions Exercise (JAE)

\* Direct School Admission-JC (DSA-JC) Exercise

**L1R4**  
AGGREGATE

20 OR LESS  
for CI

**JUNIOR COLLEGES/  
CENTRALISED  
INSTITUTE**

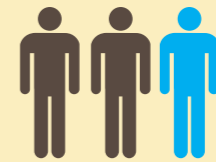


**POLYTECHNICS**

\* Joint Admissions Exercise (JAE)

\* Joint Polytechnic Special Admissions Exercise (JPSAE)

\* Direct Polytechnic Admission (DPA) Exercise



**INSTITUTE OF  
TECHNICAL  
EDUCATION**

\* Nitec-Joint Intake Exercise (JIE) by ITE

\* Higher Nitec-Joint Admission Exercise (JAE)



Ministry of Education  
SINGAPORE

For more information, visit [www.moe.gov.sg/education/admissions/](http://www.moe.gov.sg/education/admissions/)